

lively root

Welcome To Lively Root

We are delighted you have grown your Lively Root plant family. If you have any problems, need plant advice, or just want to have a great plant conversation, email us any time at support@livelyroot.com. We are incredibly thankful to have the opportunity to share our love of plants with you.

(Care Card on reverse!) ↘

Caladium

Caladium species

Caladium are a popular plant because of the red, white, pink and green colors that are common on their heart-shaped leaves.



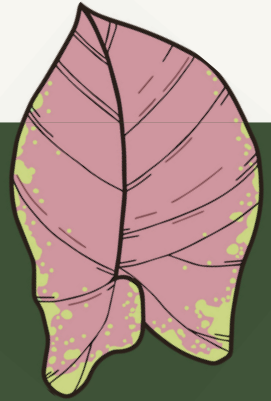
Indoor plant

65°–75°



Outdoor plant

45°–75°



✓ Success Tips

Remove dirt bag when unwrapping, and wait 30 days if possible to repot to prevent transplant shock.

Outdoor: Caladiums should be planted in the Spring.

When planting your Caladium, space tubers 4-6 inches apart as well as 4-6 inches deep and water on a weekly basis whenever soil is dry to the touch.

Indoor: Simply water when the soil dries out about once a week and place near a bright window.

☰ Care

Easy to care for. Great for beginners!

☀ Light

Enjoys medium to high indirect light.

💧 Water

Allow the soil to dry out between waterings.

🐱 Pets

Toxic to cats, dogs and pets.

Impress your friends with this cool fact

There are over 1,000 Caladium cultivators in the world!

livelyroot.com

Show off your plant: #livelyroot

Post your new plant with #livelyroot to be entered into our monthly drawing to win a new plant!

Want more info?

For more information about your plant, visit LivelyRoot.com

